



Company Profile

Founded in 2020, Starfly Steel (Uganda) Co.,Ltd. is a large-scale steel manufacturing and trade enterprise. At the beginning of 2020, the company was incorporated and therefore obtained the trading license in Uganda, and there after it has embarked on its steel processing and distribution service.

Mukono-based Starfly Steel (Uganda) Company has build up a win-win platform between premium quality mills and clients as evidenced by convenient transportation, intellectual marketing network, powerful warehousing, processing and distribution system, and abundant supply chain management experience. It provides all sorts of international standard steel processing and distribution services as demanded by clients.

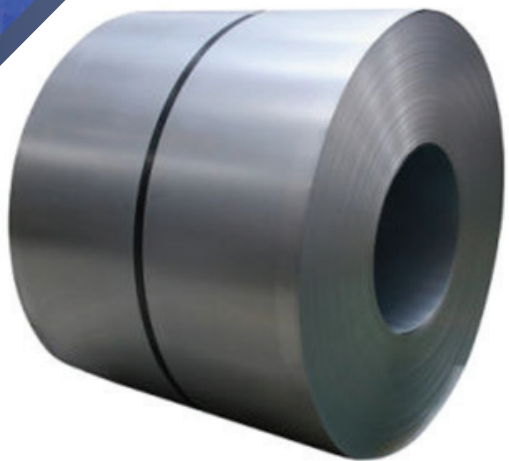
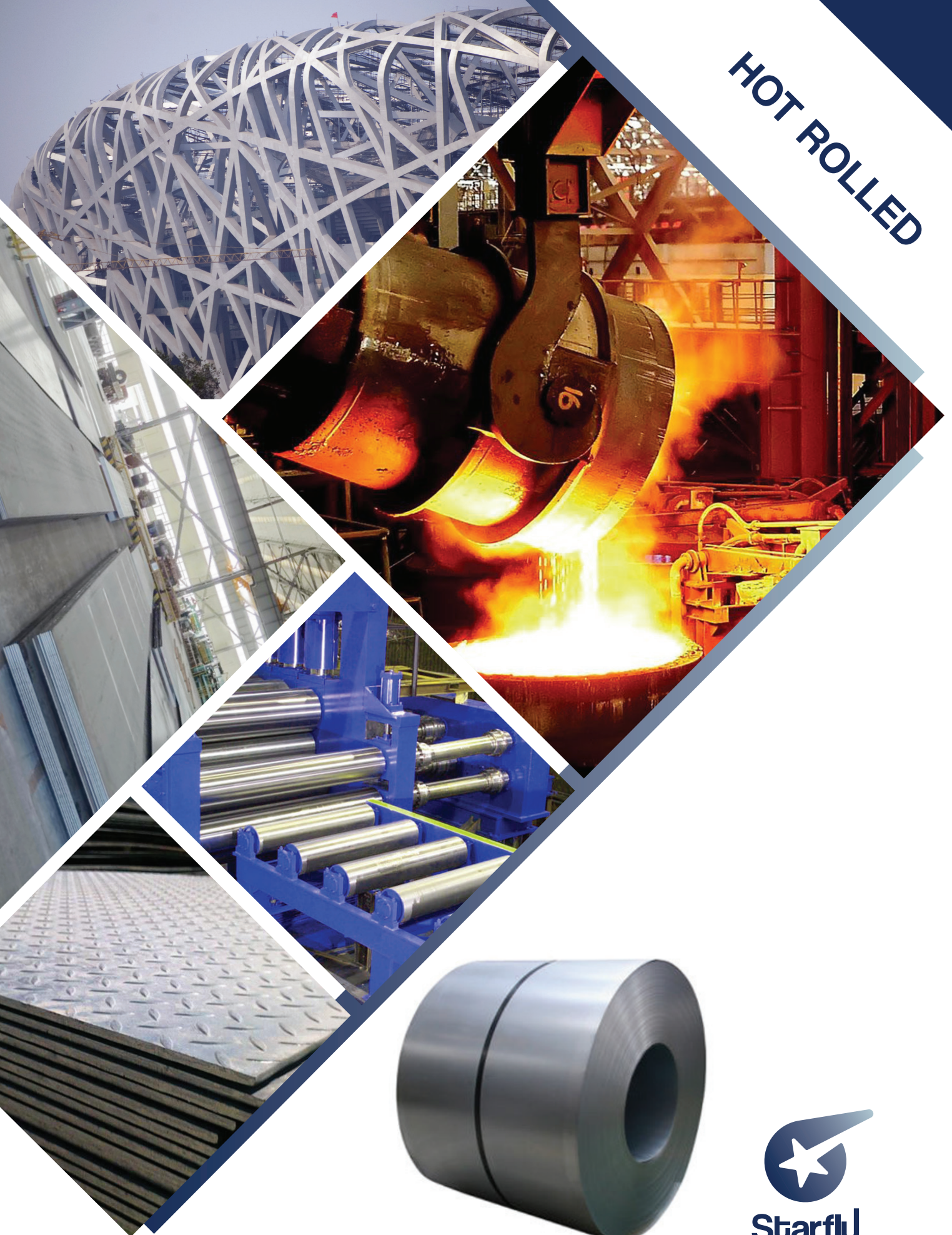
Located in Mukono, the company is a vital gateway linking Kampala - Jinjia. The company has a wide array of industrial products on offer, including hot rolled coil, hot rolled steel plate,H-beam, channel steel,angle steel, welding rod and so on.

Beyond its strength in steel products, the company also owns one processing center for hot rolled steel, which is located in Seeta with a plant areas of 1500 m² and a monthly processing capacity of 1500-2000 tons.

Starfly boasts a stable purchasing channels and customer resource in several countries and regions, which can establish stable strategic cooperative relationship among steel mills, Starfly and all stake holders in steel.



HOT ROLLED





Ms Plates

Star Fly shears and supplies plates from 0.8mm-4mm thickness in the dimensions 8ft X 4ft or 2438mm X 1219mm, 6mm-12mm thickness in dimensions 1219mm-1800mm and length of 1m-12m. MS Plates are used in canopies, metal fabrication, platforms, pedestals, structures and stands. We can cut and supply customized length plates according to the customer's requirements.

Hot Rolled Coil and Plate Catalogue 热轧产品目录			
Category 类别	Grade 材质	Thickness Range (mm) 厚度范围	Width Range (mm) 宽度范围
Carbon Structural Steel 碳素结构钢	Spht-1/SAE1006,SAE1008 SS400/A36 Q235A,B,C,D S235JR,J0,J2	0.8~20 8~200	1000~2000 1500~4000
High Strength Low Alloy Steel 高强度低合金钢	S355JR,J0,J2 A572 Gr. 50 Q345A, B, C, D, E	2.2~20	1250~2000
Checkered Steel 花纹板	Q235 SS400 A36	1.5~10	1000~1500
LPG Cylinder Steel 焊瓶钢	HP235, HP295 SG235, SG295	1.2~10	1000~1500 (1070, 1162)
Pipe Line Steel 管线钢	API-B X42-X80 L245-L450	3~20	1000~2000
Pressure Vessel Steel 容器板	Q245R, Q345R	2.5~20	1000~2000
High Tensile Structure Steel 高强结构钢	SM400~520 A, B, C A572 Gr65 Q390~550	2.5~20	1000~2000
Auto Structure Steel 汽车结构钢	SAPH310~440 HR340 27TQ	2.5~20	1000~1500
Wear-resistant steel 耐磨钢	NM400-600	4-150	1500-2500

COLD ROLLED



Starfly



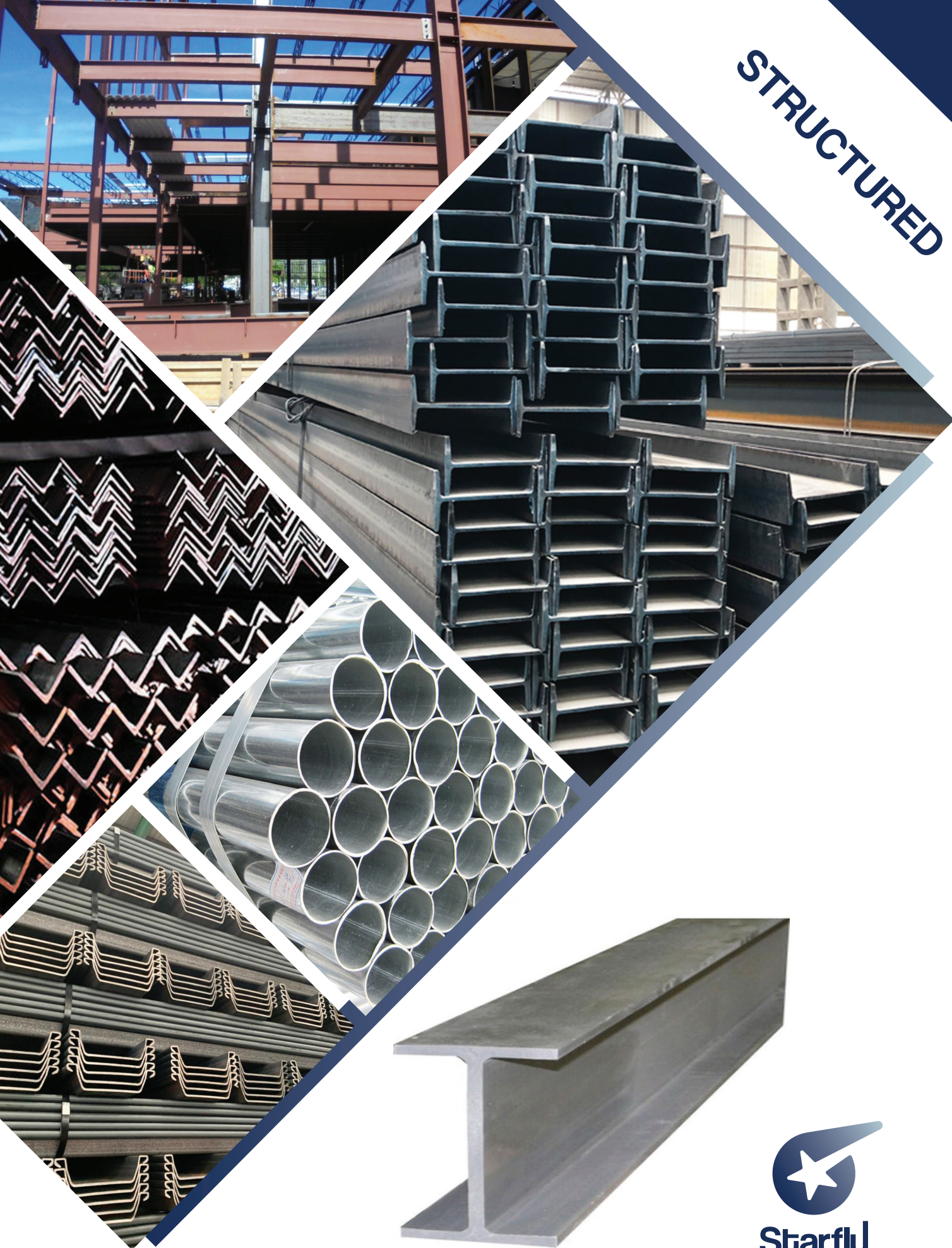
CRCA Sheet

Cold Rolled Annealed Sheets(CRCA) are cut from CRCA coils and can be supplied in standard or customized sizes. CRCA sheets are soft (annealed) and have better and controlled dimensional accuracy. They are mainly used in fabrication, drawing and forming applications, components manufacture, etc. The finish of CRCA sheets is better than that of Hot Rolled Sheets and is suitable for painting or surface coating applications. These sheets can be supplied in thicknesses ranging from 0.4mm-5mm.

Cold Rolled Coil and Plate Catalogue 冷轧产品目录

Category 类别	Grade 材质	Thickness Range 厚度范围(mm)	Width Range 宽度范围(mm)	Applicable Industrials 适用行业
Carbon Structural Steel 碳素结构钢	Q195,Q215,Q235 St37-2G, St44-3G,St52-3G	0.25~3.0	600~1950	All kinds of industrials 各行业
Drawing Steel 冲压用钢	CQ	0.25~3.0	600~1950	Automobile, home appliances industries 汽车、家电等行业
	DQ			
	DDQ			
	EDDQ			
SEDDQ	SPCC,DC01,St12,CSA,CSB,C SC SPCD,DC03,St13,DSA,DSB SPCE,SPCF,DC04,St14,DDS SPCG,DC05,St15,EDDS DC06,St16,St17			
High Strength Low Alloy Steel 高强度低合金钢	H240A,HC260LA,H280A, HC300LA,H320A,HC340LA, HC380LA,HC420LA,HC460L A, H345	0.65~2.0	600~1530	All kinds of industrials 各行业
Cold Rolling Dual Phase Steel 冷轧双相钢	CR260/450DP CR300/500DP CR340/590DP CR420/780DP CR550/980DP	0.7~2.0	800~1530	Automobile manufacturing industrial 汽车制造业
Cold Rolling TRIP Steel 冷轧 TRIP 钢	CR380/590TRIP CR420/780TRIP (TRIP800)	0.7~2.0	800~1530	Automobile manufacturing industrial 汽车制造业
Cooper Steel 制桶用钢	ZT1,ZT2,ZT3,ZT4	0.25~3.0	600~1950	Cooperage 制桶业
Lux-Cored Wire Steel 药芯焊丝用钢	AYH1,AYH2,AHY3,AHY4,AHY5 THY-2,THY-3,THY-4	0.3~2.0	850~1700	Welding wire material manufacturing industrial 焊丝材料制造

STRUCTURED



Starfly



Universal Columns/Beams

Universal columns/beams are referred to as “I-beam” and “H-beam”. They are mainly used in engineering construction, Non-Residential construction, infrastructure, super tall buildings, etc.

H-beam Catalogue H型钢产品规格								
Commodity	Size				Weight	Length	Size Standard	Grade Standard
	H	B	WEB	FLANGE	KG/M			
152×152	152.4	152.2	5.8	6.8	23	6-18M	BS 4-1	EN 10025-2
	157.6	152.9	6.5	9.4	30			
203×102×23	203.2	101.8	5.4	9.3	23.1			
203×133	203.2	133.2	5.7	7.8	25.1			
203×203	206.2	204.3	7.9	12.5	52			
	209.6	205.8	9.4	14.2	60			
254×102	254	101.6	5.7	6.8	22			
	257.2	101.9	6	8.4	25.2			
254×146	251.4	146.1	6	8.6	31.1			
	256	146.4	6.3	10.9	37			
254×254	254.1	254.6	8.6	14.2	73.1			
	260.3	256.3	10.3	17.3	88.9			
305×102	305.1	101.6	5.8	7	24.8			
	308.7	101.8	6	8.8	28.2			
305×127	304.4	123.4	7.1	10.7	37			
	307.2	124.3	8	12.1	41.9			
305×165	303.4	165	6	10.2	40.3			
	306.6	165.7	6.7	11.8	46.1			
305×305	307.9	305.3	9.9	15.4	96.9			
	314.5	307.4	12	18.7	117.9			
356×127	349	125.4	6	8.5	33.1			
	353.4	126	6.6	10.7	39.1			
356×171	351.4	171.1	7	9.7	45			
	355	171.5	7.4	11.5	51			
356×368	355.6	368.6	10.4	17.5	129			
	362	370.5	12.3	20.7	152.9			
406×140	403.2	142.2	6.8	11.2	46			
406×178	402.6	177.7	7.7	10.9	54.1			
	406.4	177.9	7.9	12.8	60.1			
457×152	454.6	152.9	8.1	13.3	59.8			
	458	153.8	9	15	67.2			
457×191	453.4	189.9	8.5	12.7	67.1			
	457	190.4	9	14.5	74.3			
533×210	528.3	208.8	9.6	13.2	82.2			
	533.1	209.3	10.1	15.6	92.1			
610×229	602.6	227.6	10.5	14.8	101.2			
686×254	677.9	253	11.7	16.2	125.2			
762×267	750	264.4	12	15.5	133.9			

I.P.E Sections 小型H型钢

Nominal size(mm)	Theoretical mass Kg/m	Height(mm)	Width(mm)	FLANGE Thickness(mm)	WEB Thickness(mm)
100*55	8.1	100	55	5.7	4.1
120*64	1.4	120	64	6.3	4.4
140*73	12.9	140	73	6.9	4.7
160*82	15.8	160	82	7.4	5
180*91	18.8	161	91	8	5.3
200*100	22.4	162	100	8.5	5.6